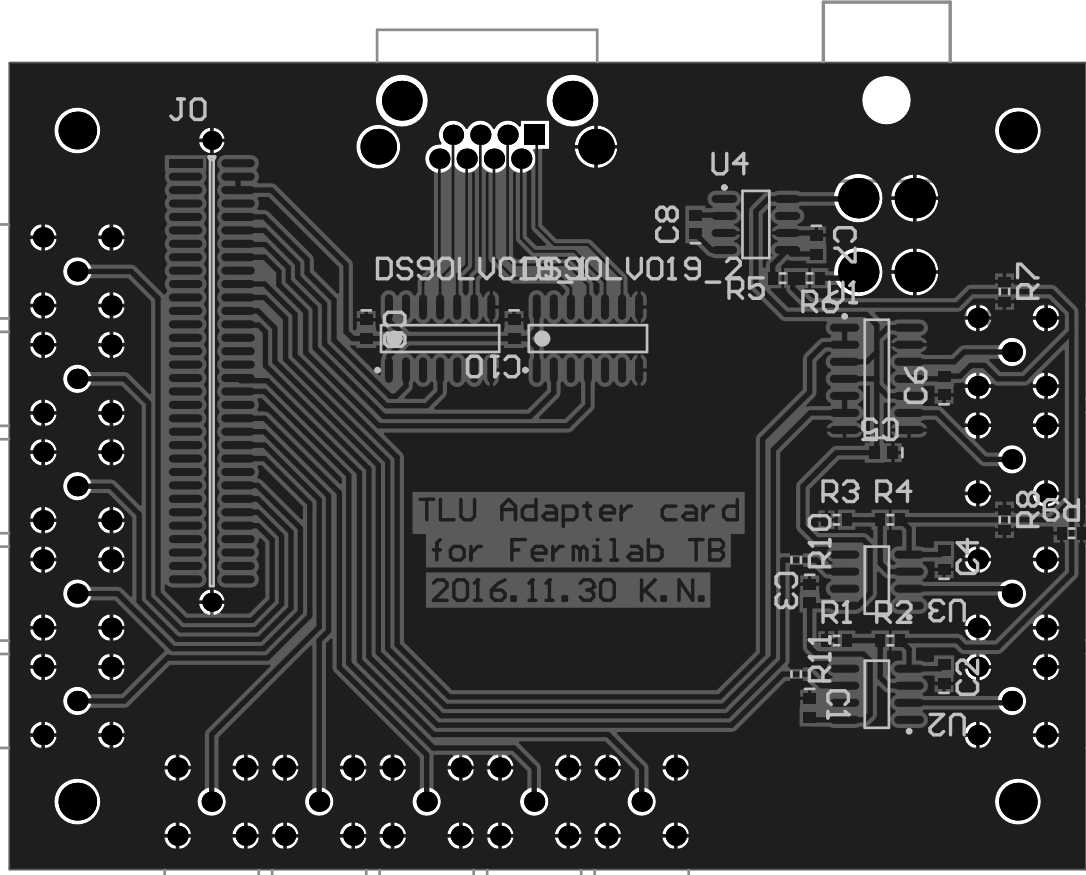


Title		
Size	Number	Revision
A4		
Date:	30/11/2016	Sheet of
File:	E:\Users\...\TLUadaptercard.SchDoc	Drawn By:

0 1 2 3 4 5 6 7 8 9 10 11 12 13 14 15 16 17 18 19 20 21 22 23 24 25 26 27 28 29 30 31 32 33 34 35 36 37 38 39 40 41 42 43 44 45 46 47 48 49 50 51 52 53 54 55 56 57 58 59 60 61 62 63 64 65 66 67 68 69 70 71 72 73 74 75 76 77 78 79 80 81 82 83 84 85 86 87 88 89 90 91 92 93 94 95 96 97 98 99

0 1 2 3 4 5 6 7 8 9 10 11 12 13 14 15 16 17 18 19 20 21 22 23 24 25 26 27 28 29 30 31 32 33 34 35 36 37 38 39 40 41 42 43 44 45 46 47 48 49 50 51 52 53 54 55 56 57 58 59 60 61 62 63 64 65 66 67 68 69 70 71 72 73 74 75 76 77 78 79 80 81 82 83 84 85 86 87 88 89 90 91 92 93 94 95 96 97 98 99



0 1 2 3 4 5 6 7 8 9 10 11 12 13 14 15 16 17 18 19 20 21 22 23 24 25 26 27 28 29 30 31 32 33 34 35 36 37 38 39 40 41 42 43 44 45 46 47 48 49 50 51 52 53 54 55 56 57 58 59 60 61 62 63 64 65 66 67 68 69 70 71 72 73 74 75 76 77 78 79 80 81 82 83 84 85 86 87 88 89 90 91 92 93 94 95 96 97 98 99

Bill of Materials

<Parameter Title not found>

Source Data From: TLUadaptercard.PrjPcb
 Project: TLUadaptercard.PrjPcb
 Variant: None

Creation Date: 30/11/2016 14:42:04
 Print Date: 30-Nov-16 2:42:07 PM

Footprint	Comment	LibRef	Designator	Description	Quantity
C0603_imp_L		C	C1, C2, C3, C4, C5, C6, C7, C8, C9, C10	Capacitor	10
D014_L	Component_1	Component_1	DS90LV019_1, DS90LV019_2		2
Kyosela5015	Kyocera_connector_5015	Kyocera_connector_5015	J0		1
LEMO horiz.	-	LEMO coax	LVC MOSin0, LVC MOSin1, LVC MOSin2, LVC MOSin3, LVC MOSin4, LVC MOSout0, LVC MOSout1, LVC MOSout2, LVC MOSout3, LVC MOSout4, NIMin4, NIMin5, NIMOUT2, NIMOUT3	LEMO/BNC Buchse, aufrecht od. gewinkelt	14
MOLEX SD-5569 -04A2	-	MOLEX SD-5569-04	Power In1	MOLEX 4 pin Power Connector, SD-5569-0a	1
R0603_imp_L	R?	R	R1, R2, R3, R4	SMD Chip Resistor	4
44620-0002	-	RJ-45 Buchse	RJ45_0	Modular Jack, Right Angle RJ-45, Low Profile, Inverted, with all Panel Grounding Tabs, Shielded with RJ-11 Keepout Feature	1
D014_N	SN75110AD	SN75110AD	U1	Dual Line Driver	1
D008_N	TL721D	TL721D	U2, U3	Differential Comparator	2
D008_L	LTC1046(LT1962EMS8)	LT1962EMS8	U4	300mA, Low Noise, Micropower Low Dropout Regulator	1

37

Approved	Notes

